



GUILDCREST ESTATES



2 Lynx Street, Margate CT9 4FX





GUILDCREST ESTATES

Lynx Street, Margate CT9 4FX

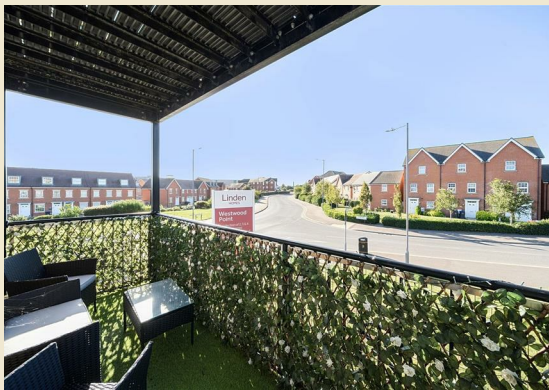
Offers in excess of £210,000

Nestled on Lynx Street in the lovely coastal town of Margate, this modern first-floor flat offers a delightful living experience. With two well-proportioned bedrooms, including a master suite complete with an en suite bathroom, this property is perfect for both individuals and small families seeking comfort and convenience.

The heart of the home is a spacious and bright lounge that seamlessly integrates with the dining area and kitchen, creating an inviting space for relaxation and entertaining. Large windows allow natural light to flood the room, enhancing the airy atmosphere. Step out onto the private balcony to enjoy a morning coffee or unwind in the evening with a view.

This apartment also boasts a second bathroom, ensuring ample facilities for residents and guests alike. The property comes with the added benefit of allocated parking for one vehicle, a valuable feature in this bustling area.

With a long lease in place, this flat represents a fantastic opportunity for those looking to invest in a modern property close to local amenities. The Westwood Cross shopping centre is just a stone's throw away, offering a variety of shops, restaurants, and entertainment options.





In summary, this beautiful two-bedroom apartment on Lynx Street is a perfect blend of modern living and convenience, making it an ideal choice for anyone looking to enjoy the vibrant lifestyle that Margate has to offer.

Council Tax Band B

Lease remaining 995 Years

Service Charge £1466pa - approx £122pcm

Leasehold

Mains water, sewer, electricity, gas with gas central heating



GUILDCREST ESTATES

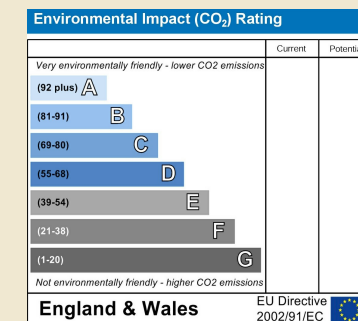
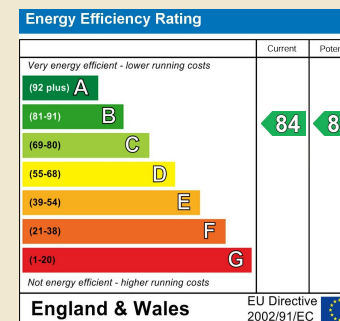
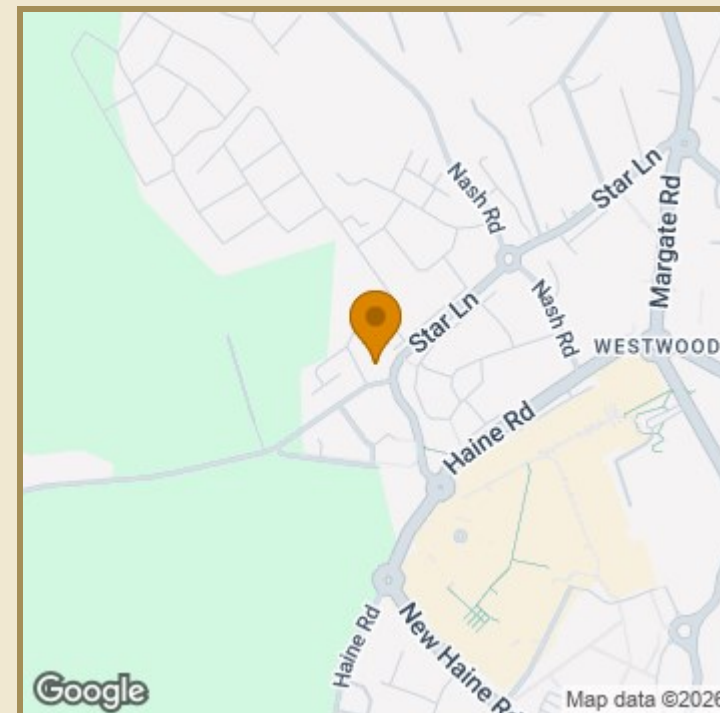
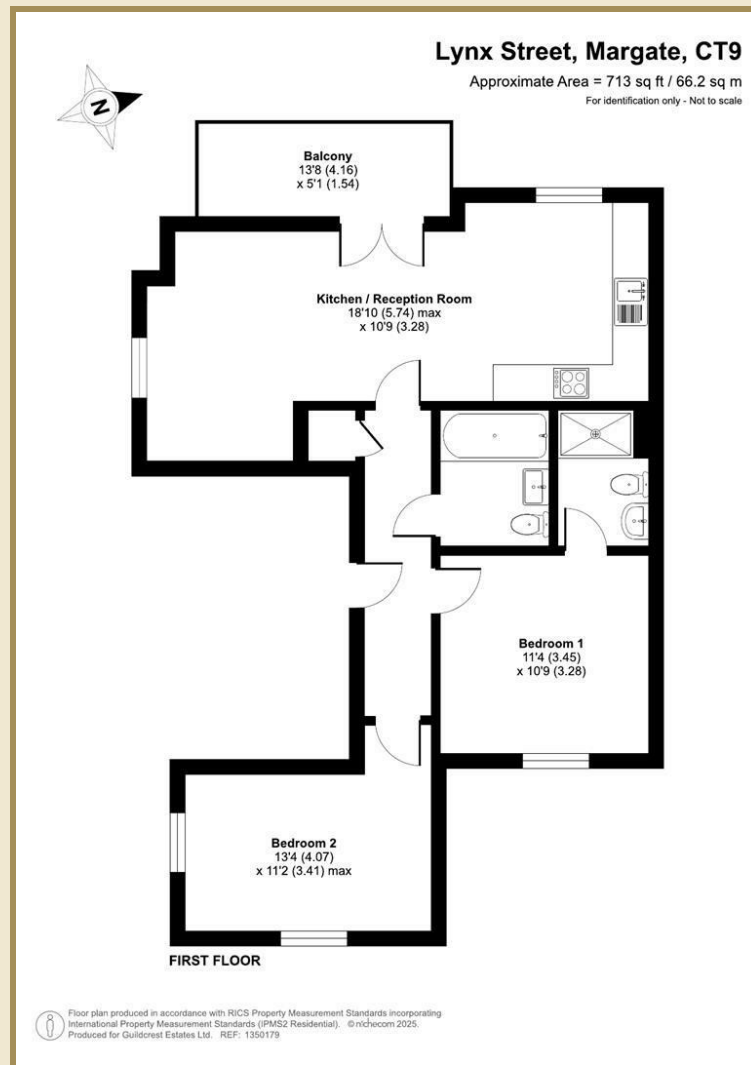
Key Features

- First floor apartment with balcony
- 2 bedrooms
- En suite to master bedroom
- Open plan kitchen/dining room/Lounge
- Close to Westwood Cross Shopping Centre
- Allocated parking
- Beautifully presented
- Council Tax Band B

Important Information

Leasehold
Flat - Purpose Built
713.00 sq ft
Council Tax Band B
EPC Rating B

£210,000



01843 272200 www.guildcrestestates.co.uk

1 The Laurels, Manston Business Park, Ramsgate, Kent CT12 5NQ



Guildcrest Estates Ltd. Registered Office 1 Percy Road, Broadstairs, Kent CT10 3LB Company Number: 13135084 Registered In England & Wales | VAT Number: 374 4288 71

Disclaimer These particulars, whilst believed to be accurate are set out as a general outline only for guidance and do not constitute any part of an offer or contract. Intending purchasers should not rely on them as statements of representation of fact, but must satisfy themselves by inspection or otherwise as to their accuracy. No person in this firm's employment has the authority to make or give any representation or warranty in respect of the property.